

Lichtenberg

Möllendorffstraße 108,109 in 10367 Berlin

WE 4.2

### Key Facts

<b>Object Type</b>	<b>Location</b>	<b>Living Space</b>	<b>Rooms</b>	<b>Status</b>
Condominium	4th floor	68 sqm	2	rented
<b>Build In</b>	<b>Heating</b>	<b>Balcony</b>	<b>Elevator</b>	<b>Net Rent</b>
1890	gas central heating	no	no	540,44 € / Month

### Purchase Price

**279.000,00 €**

(plus 2,38 % commission)

**FORTICA Real Estate GmbH**

Director: Friedemann Weck | Procurist: Sandra Richter

Hardenbergstraße 12, 10623 Berlin | Register Court Charlottenburg | HRB: 164630 B

Web: [www.fortica.de](http://www.fortica.de) | Fon: 030 – 403 684 290 | Tax Number: 27/289/31768



## Object Description

Built in 1890, this imposing apartment building on the corner of Möllendorffstraße and Parkau stands out from afar with its oriel tower. The typical architecture of the Art Nouveau period, which has its own unique charm, is evidenced by ornaments on the monumental listed facades and the bright entrance area. In the staircases, one finds beautiful details typical of old buildings, such as wooden railings and original, wooden apartment entrance doors.

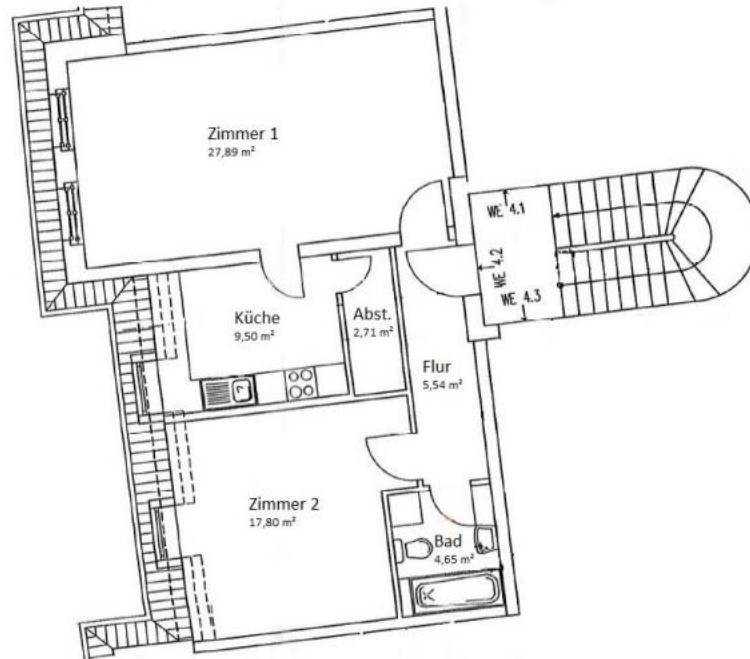
The spacious, landscaped backyard offers plenty of bicycle parking and a seating area with a table for chatting with neighbors and friends.

The corner building includes 4 floors with 21 apartments and 5 commercial units. The sizes vary from 2 to 5 rooms with about 40 to 195 m<sup>2</sup>. Heat is supplied by a gas central heating system, as well as a central hot water supply.

The apartments are bright and sunny, many have balconies or terraces that invite you to relax. The high ceilings and large windows, which let a lot of light into the representative rooms, convince of the typical old building charm. The practical daylight bathrooms have either a shower or a bathtub. Additional comfort is provided by the guest WCs, most of which are available. Storage rooms in most apartments and a cellar compartment offer additional storage space.

### **FORTICA Real Estate GmbH**

Director: Friedemann Weck | Procurist: Sandra Richter  
Hardenbergstraße 12, 10623 Berlin | Register Court Charlottenburg | HRB: 164630 B  
Web: [www.fortica.de](http://www.fortica.de) | Fon: 030 – 403 684 290 | Tax Number: 27/289/31768



## Apartment Features

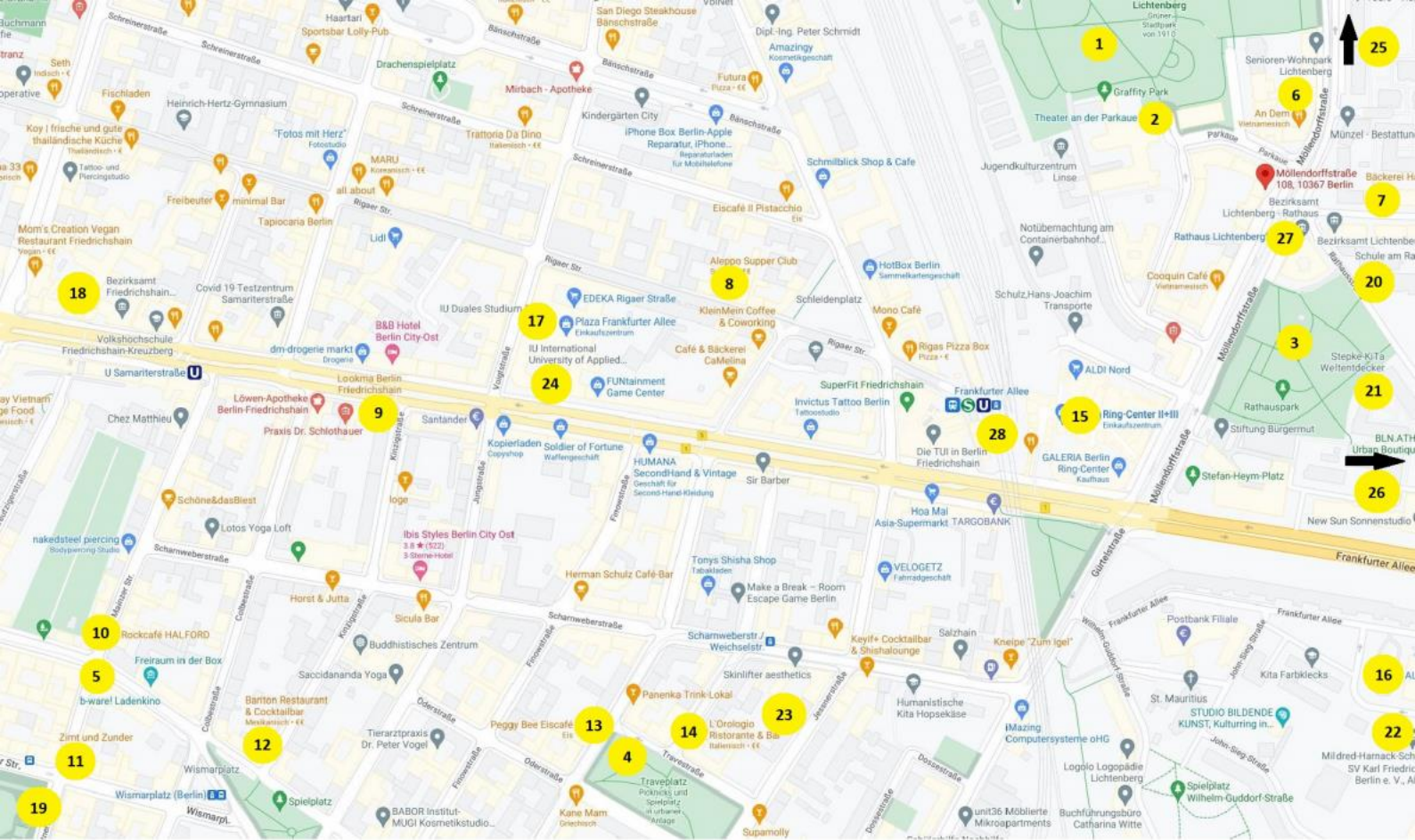
The rented 2 room apartment is located in the attic of the front building and impresses with the following features:

- 2 rooms approx. 68 sqm
- tiled bathroom with bathtub
- storage room in the apartment
- heating system: gas central heating
- floor covering: laminate
- Iso-wood windows
- cellar room
- net cold rent: 540,44 € / per month
- advance payment of service charges: 190,00 € / month
- housing allowance: 230,01 € / month
- condition: well-kept

The registration of own use should be possible in consideration of the legal requirements and in compliance with the legal notice periods. Whether the conditions in the individual case are present, is to be examined by the buyer in own responsibility.

**FORTICA Real Estate GmbH**

Director: Friedemann Weck | Procurist: Sandra Richter  
Hardenbergstraße 12, 10623 Berlin | Register Court Charlottenburg | HRB: 164630 B  
Web: [www.fortica.de](http://www.fortica.de) | Fon: 030 – 403 684 290 | Tax Number: 27/289/31768



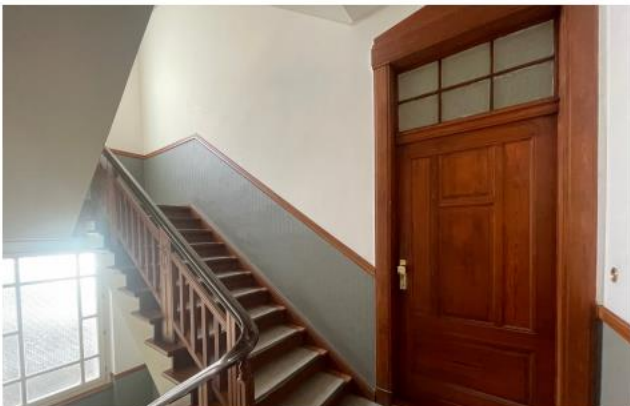
**Parks/Hobby:** 1. Stadtpark Lichtenberg, 2. Theater an der Parkaue, 3. Rathauspark, 4. Traveplatz, 5. b-ware! Ladenkino **Restaurants&Bars:** 6. An Dem – Vietnamesisches Restaurant, 7. Bäckerei Hannemann, 8. Aleppo Supper Club, 9. Lookma Berlin, 10. Rockcafé Halford, 11. Zimt&Zunder, 12. Bariton Restaurant&Cocktailbar, 13. Peggy Bee Eiscafé, 14. L’Orologio Ristorante&Bar **Shopping:** 15. RingCenter, 16. Aldi Nord, 17. Plaza Frankfurter Allee, 18. Rigaer Passage, 19. Wochenmarkt Boxhagener Platz **Education&Kindergarten:** 20. Schule am Rathaus, 21. Kita Stepke Weltentdecker, 22. Mildred-Harnack-Schule, 23. Grundschule am Traveplatz, 24. Berufsschule für Sozialassistenten (WBS Schulen) **Healthcare:** 25. Ärztezentrum Möllendorffstraße, 26. SANA Klinikum Lichtenberg **Mobility:** 27. Bus- & Straßenbahnhaltestelle Rathaus Lichtenberg, 28. S+U Bahnhof Frankfurter Allee

## Location description

Located directly at the Lichtenberg city park, the corner building Möllendorffstraße 138,139 / Parkaue 36 with its beautiful bay window tower is visible from afar. Directly opposite is the Lichtenberg town hall, which also houses the district’s registry and citizens’ office. If you walk from here in the direction of Frankfurter Allee, you will reach the Ring Center, a popular shopping center with many shopping opportunities, after only 2 minutes. If you don’t want to walk, you can alternatively use the streetcar lines M13 and 16, which stop right outside the front door. Also the subway line U5, which goes via the station Alexanderplatz to the main station and the ring trains S41 and S42, as well as the S Bahn 8 in the direction of the science location Adlershof are within a few minutes walking distance and connect Lichtenberg very conveniently not only with the city center. The aforementioned Stadtpark Lichtenberg offers opportunities for walking, picnicking and lingering, especially in the summer months. A small pond, a hill for sledding in winter and the newly built playground attract especially the children of the neighborhood. Directly adjacent is the small “Theater am Park”, which not only performs plays for children, but also regularly offers entertaining art for adults. If you drive along Möllendorffstraße, you can reach the medical center after only 2 stops by streetcar, which offers a variety of specialists. Also various supermarkets can be reached quickly on foot or with the nearby “Öffis”. Due to the family-friendly residential area, various daycare centers and a school have also settled here. Lichtenberg and especially the neighborhood around Möllendorffstraße are not only popular with young families and couples who want to settle here for the long term. The sought-after, up-and-coming district attracts people of all cultures and ages.

### FORTICA Real Estate GmbH

Director: Friedemann Weck | Procurist: Sandra Richter  
 Hardenbergstraße 12, 10623 Berlin | Register Court Charlottenburg | HRB: 164630 B  
 Web: [www.fortica.de](http://www.fortica.de) | Fon: 030 – 403 684 290 | Tax Number: 27/289/31768



**FORTICA Real Estate GmbH**

Director: Friedemann Weck | Procurist: Sandra Richter  
Hardenbergstraße 12, 10623 Berlin | Register Court Charlottenburg | HRB: 164630 B  
Web: [www.fortica.de](http://www.fortica.de) | Fon: 030 – 403 684 290 | Tax Number: 27/289/31768

Notes

---

---

---

---

---

---

---

---

---

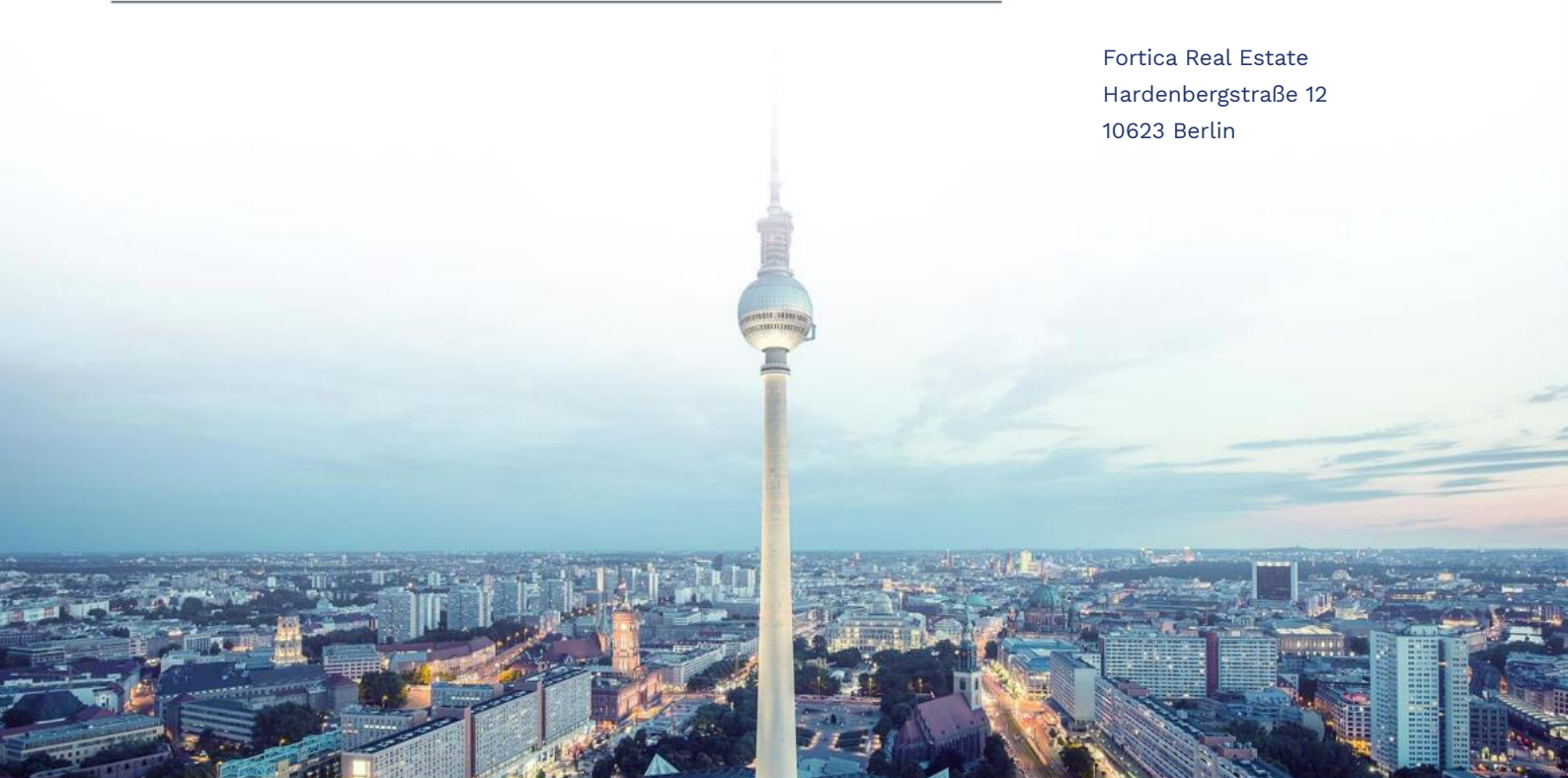
---

Your Contact



Sandra Richter  
Telephone: +49 30 403 684 290  
E-Mail: [s.richter@fortica.de](mailto:s.richter@fortica.de)

Fortica Real Estate  
Hardenbergstraße 12  
10623 Berlin



With the use of our service, between us, Fortica Real Estate GmbH, Hardenbergstraße 12, 10623 Berlin, and you a broker agreement is concluded. You entrust us with the proof of the opportunity to conclude a purchase contract on the above described in the exposé or another, according to your requirements, appropriate plot of land (hereinafter “property”) or with the mediation of the conclusion of a sale of the property. Upon signing purchase agreements for the property, commission of 2,38 % incl. VAT of the purchase price, is to be paid by you. Furthermore, our general terms are appended.

**FORTICA Real Estate GmbH**

Director: Friedemann Weck | Procurist: Sandra Richter  
Hardenbergstraße 12, 10623 Berlin | Register Court Charlottenburg | HRB: 164630 B  
Web: [www.fortica.de](http://www.fortica.de) | Fon: 030 – 403 684 290 | Tax Number: 27/289/31768